

George J. Hartman
Architects, P.C.

6905 Telegraph Road
Suite 101
Bloomfield Hills, MI
48301

248-258-5811 ph.

harmanarchitects@ameritech.net

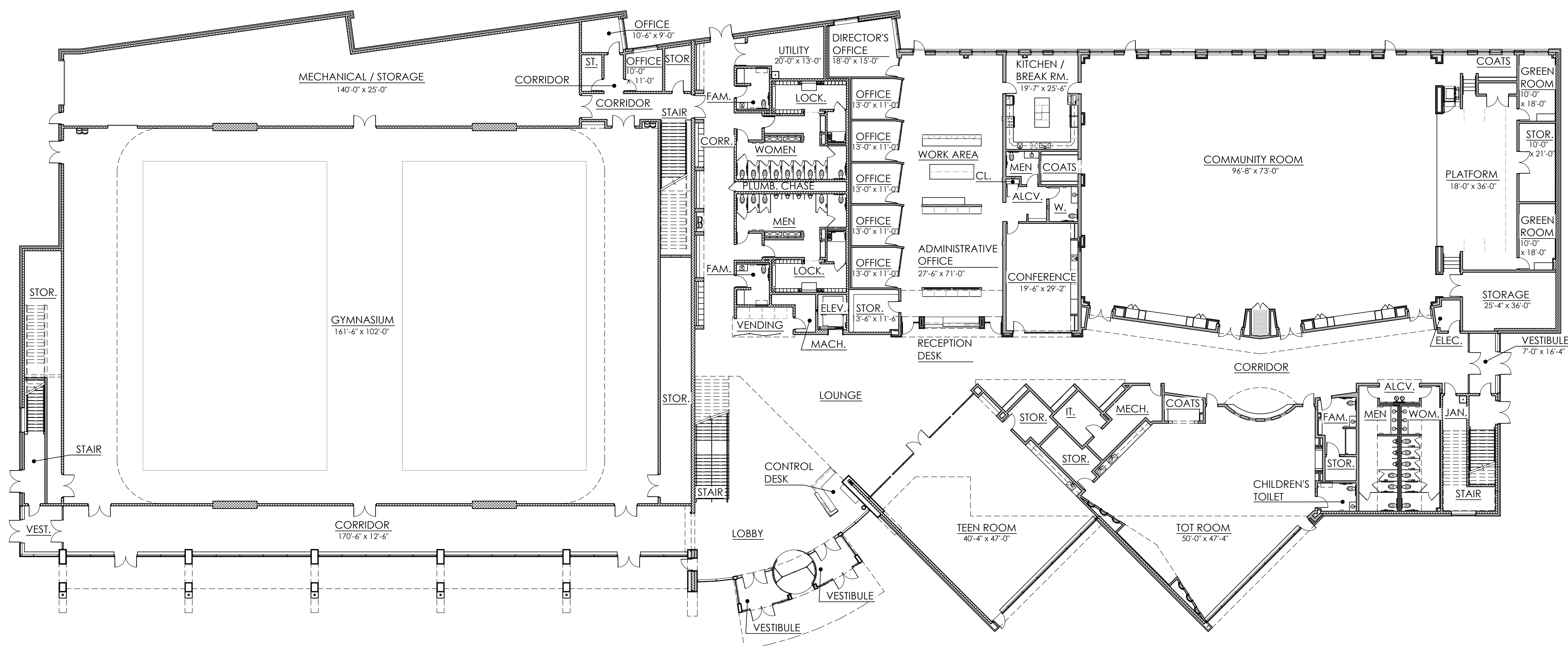
Project:

City
of
Sterling Heights
**Community
Center**

40250 Dodge Park Rd.
Sterling Heights
Michigan, 48313

© Copyright: 2018

THESE DRAWINGS, DOCUMENTS, DESIGN, DETAILS
AND ATTACHMENTS ARE THE SOLE PROPERTY OF
GEORGE J. HARTMAN ARCHITECTS, P.C. AND ARE
NOT TO BE REPRODUCED IN PART OR IN WHOLE
WITHOUT EXPRESS WRITTEN CONSENT OF GEORGE J.
HARTMAN ARCHITECTS, P.C. THESE DRAWINGS ARE
PROTECTED BY THE FEDERAL COPYRIGHT ACT.



FIRST FLOOR PLAN
SCALE: 1/16" = 1'-0"
PLAN NORTH