

George J. Hartman
Architects, P.C.

6905 Telegraph Road
Suite 101
Bloomfield Hills, MI
48301

248-258-5811 ph.

hartmanarchitects@ameritech.net

Project:

Community Center

Released For:

- Office Review #1 July 5, 2017
- Office Review #2 July 28, 2017
- Preliminary Structural October 18, 2017
- Review November 1, 2017
- Office Review #3 Nov. 3, 2017
- Office Review #4 Dec. 7, 2017

-
-
-
-
-
-
-
-
-
-

Copyright: 2018

THESE DRAWINGS, DOCUMENTS, DESIGN DETAILS AND ATTACHMENTS ARE THE SOLE PROPERTY OF GEORGE J. HARTMAN ARCHITECTS, P.C. AND ARE NOT TO BE REPRODUCED IN ANY FORM OR BY ANY MEANS WITHOUT EXPRESS WRITTEN CONSENT OF GEORGE J. HARTMAN ARCHITECTS, P.C. THESE DRAWINGS ARE PROTECTED BY THE FEDERAL COPYRIGHT ACT.

NOTE TO THE BUILDING OFFICIAL:
THESE DOCUMENTS ARE SUBMITTED ONLY FOR THE PROJECT LISTED ABOVE AND SHOULD NOT BE ACCEPTED WITHOUT THE SIGNATURE AND SEAL OF THE ARCHITECT.

Scale

AS NOTED

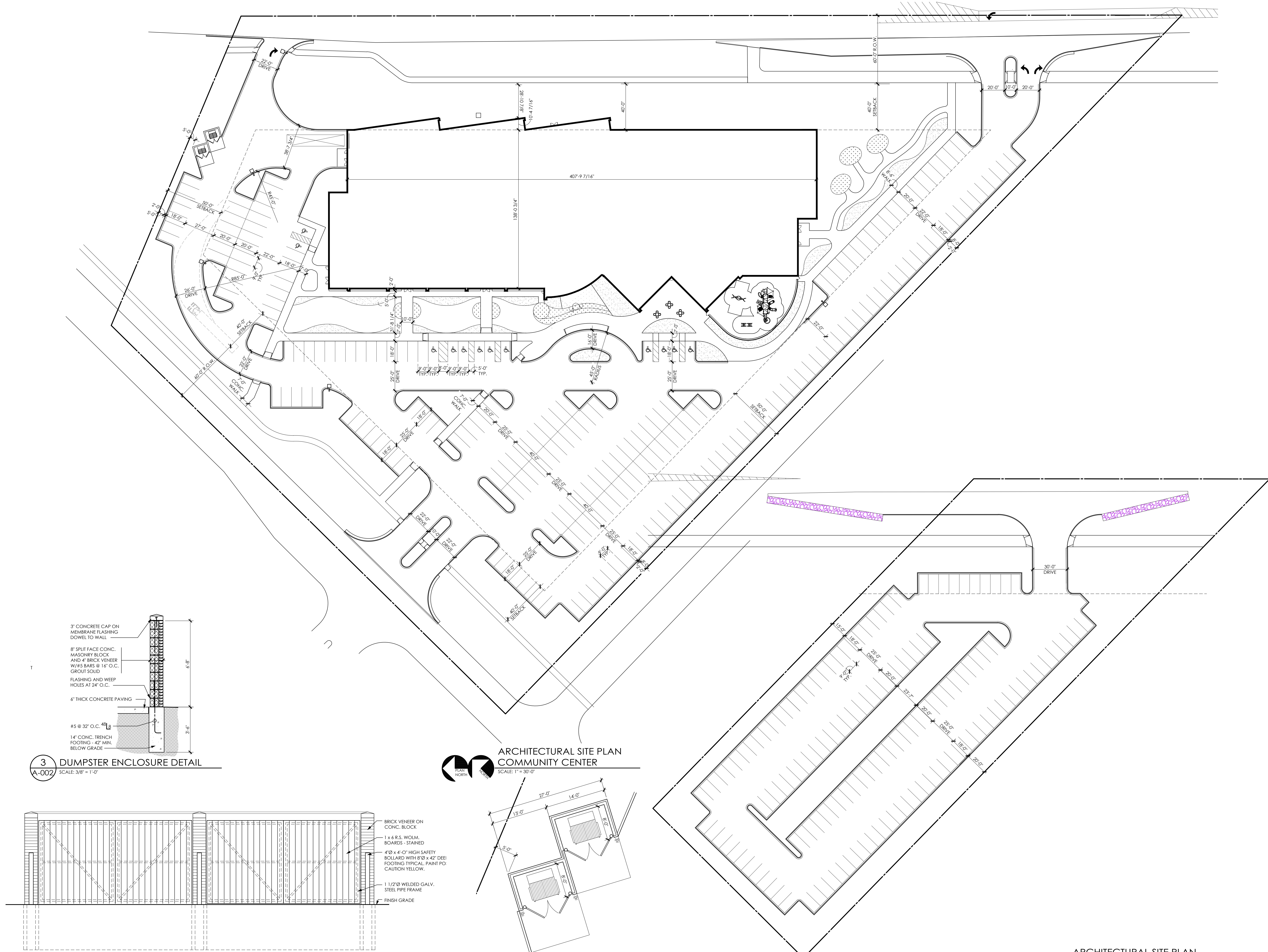
Project Number

1665

Sheet Number

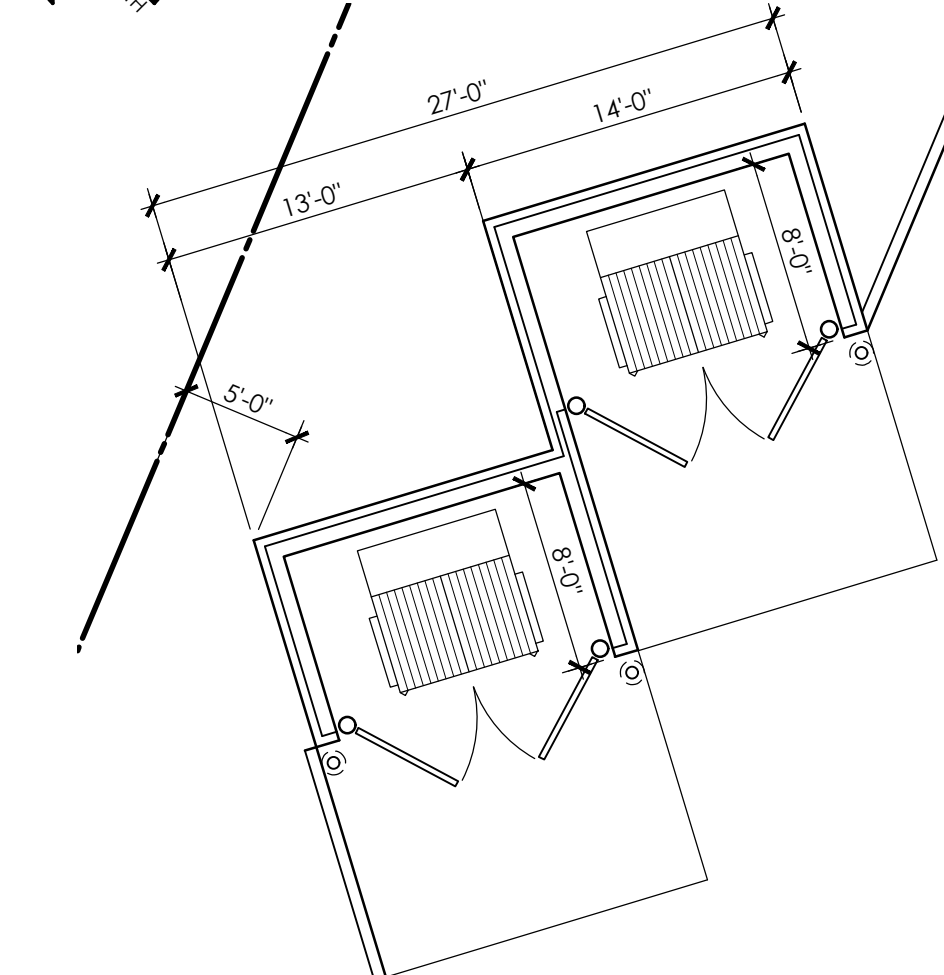
A-001.1

1665 - Architectural Site Plan
Reduced Base Plan



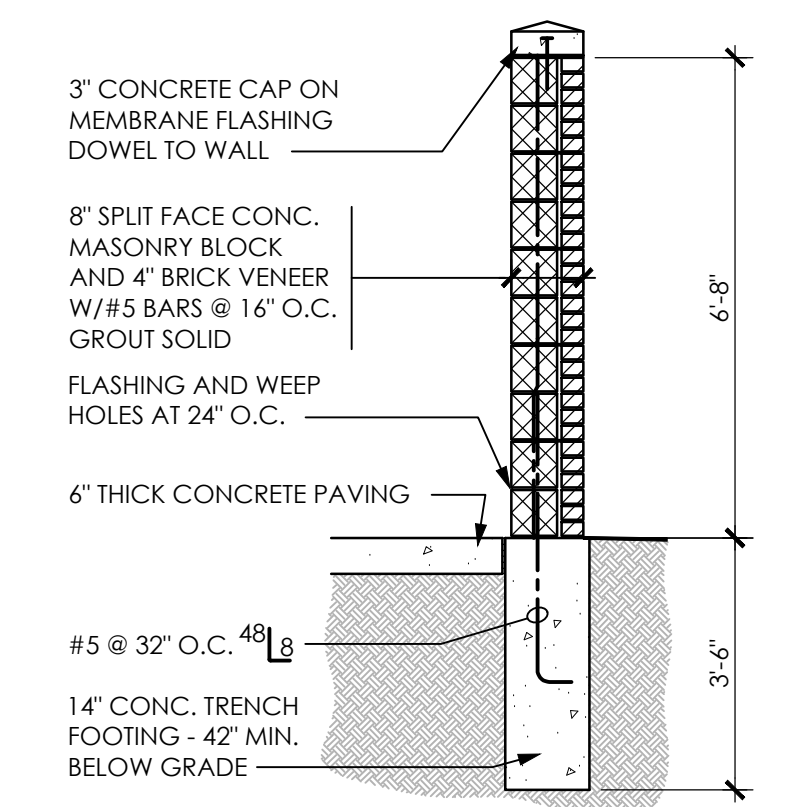
ARCHITECTURAL SITE PLAN
COMMUNITY CENTER

SCALE: 1" = 30'-0"



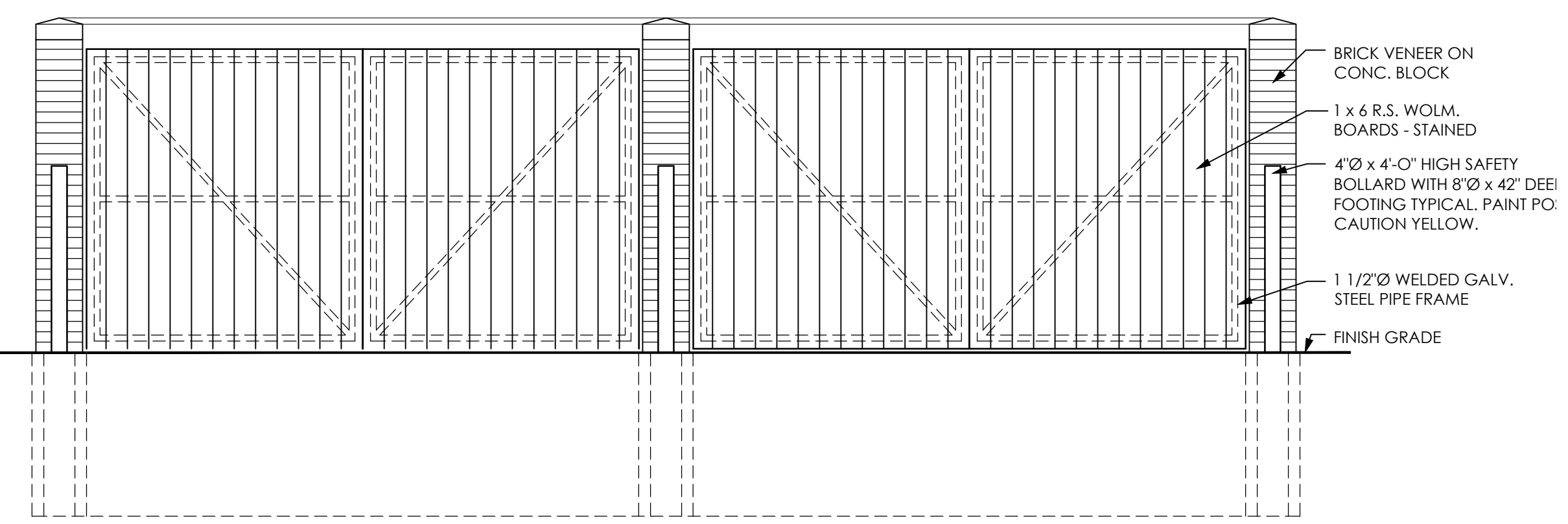
1 DUMPSTER ENCLOSURE

SCALE: 1/8" = 1'-0"



3 DUMPSTER ENCLOSURE DETAIL

SCALE: 3/8" = 1'-0"



2 DUMPSTER ENCLOSURE ELEVATION

SCALE: 3/8" = 1'-0"